



HKUST School of Science

Academic Advising and Support

Office of Academic Advising and Support

- Academic Advising Team
- Student Development Team



Overview of Academic Advising

Academic Advising

Our key responsibilities are to make sure students are aware of the campus resources which allow them to make informed choices about their major and career

Pre University

- Academic induction (information)
- Orientation (social)
- Peer mentor meeting (social)

Fall Term: SCIE1000 (details on following slides)

- University Education
- Self and Major exploration
- Personal Development Plan

Winter Break:

Meeting with students who have adjustment issues

Spring: SCIE1000

- Major declaration Talk
- One-on-one personal consultation

People

It requires a collective effort and a big network to ensure that students are not left alone. Each year one student is assigned to an advising staff, a peer mentor and a faculty advisor. It is mandatory for students to meet the advising staff and peer mentor at least once in their first year while meeting with pre-major faculty advisor is optional



Advising staff

Provide advice on major selection/personal development/university policy & regulation/other related matters



Pre-major Faculty Advisor

Provide advice on major selection/academic/research development



Peer mentor

Provide tips on studying, course selection, social activities on campus

Student Engagement Programs

We believe that staff-student relationship is essential for a harmonious community and such relationship would be better developed through an non-academic context.

SCI by Side 「同理一齊」 Series

Our staff in fact have many talents. They can engage students by sharing their own talents and interest and build relationship with them.

Student Science Music Band

Engage science students with passions in music

Peer Mentoring Program

Engage students with passions in helping their juniors and developing their leadership and teamwork skills

Peer Tutoring Program

Engage students with passions in math education and helping their juniors who are weak in math

Pre University Support

- **July to Aug:** Join a group consultation on credit transfer, major selection and course selection & activities that Peer Mentors organized for you to meet new friends
- **Mid Aug:** Join small group math tutorial if you do not have calculus background
- **Late Aug:** Join Academic Induction & orientation party to meet all the other local and non local students

Majors for Science (Group A)

Under School-based admission, students admitted into the School of Science through Science (Group A) program upon completion of the first year of study will enroll into one of the following degree programs:

Offered by School of Science:

- BSc in Mathematics (MATH) (must declare in a specific track)
 - BSc in Ocean Science and Technology (OST)
 - BSc in Physics (PHYS)
 - BSc in Data Analytics in Science (DASC)
 - BSc in Mathematics/Ocean Science and Technology/Physics with extended Major in Artificial Intelligence
-

Offered by Joint School Programs:

- BSc in Data Science and Technology (DSCT)
 - BSc in Mathematics and Economics (MAEC)
 - BSc in Risk Management and Business Intelligence (RMBI)
-

Offered by Interdisciplinary Program:

- BSc in Environmental Management and Technology (EVMT)
- BSc in Individualized Interdisciplinary Major (IIM)

Science (Group A) with an Extended Major in Artificial Intelligence

Offered by School of Science:

- **BSc in Mathematics (MATH) (must declare in a specific track) + AI**
 - **BSc in Ocean Science and Technology (OST) + AI**
 - **BSc in Physics (PHYS) + AI**
 - **BSc in Data Analytics in Science (DASC)**
-

Offered by Joint School Programs:

- **BSc in Data Science and Technology (DSCT)**
 - **BSc in Mathematics and Economics (MAEC)**
 - **BSc in Risk Management and Business Intelligence (RMBI)**
-

Offered by Interdisciplinary Program:

- **BSc in Environmental Management and Technology (EVMT)**
- **BSc in Individualized Interdisciplinary Major (IIM)**

Majors for Science (Group B)

Under School-based admission, students admitted into the School of Science through Science (Group B) program upon completion of the first year of study will enroll into one of the following degree programs:

Offered by School of Science:

- **Majors in Life Science (you will choose a specific LIFS major in Year 2 Fall)**
 - BSc in Biochemistry and Cell Biology
 - BSc in Biological Science
 - BSc in Biotechnology
- **BSc in Chemistry**
- **BSc in Ocean Science and Technology (OST)**

Offered by Joint School Programs:

- **BSc in Biotechnology and Business**

Offered by Interdisciplinary Program:

- BSc & BBA Dual Degree Program in Technology and Management (BTGBM, BTFINA, BTECON, BTMGMT, BTMARK)
- BSc in Environmental Management and Technology (EVMT)
- BSc in Individualized Interdisciplinary Major (IIM) e.g. Anthropomorphism In Interactive Systems, Behavioral Consumer Science, etc.

Majors for IRE

Offered by School of Science:

- BSc in Mathematics (MATH) (must declare in a specific track)
- BSc in Ocean Science and Technology (OST)
- BSc in Physics (PHYS)
- Majors in Life Science (you will choose a specific LIFS major in Year 2 Fall)
 - BSc in Biochemistry and Cell Biology
 - BSc in Biotechnology
- BSc in Chemistry
- BSc in Data Analytics in Science (DASC)
- BSc in Mathematics/Ocean Science and Technology/Physics with extended Major in Artificial Intelligence
- -----

Offered by Joint School Programs:

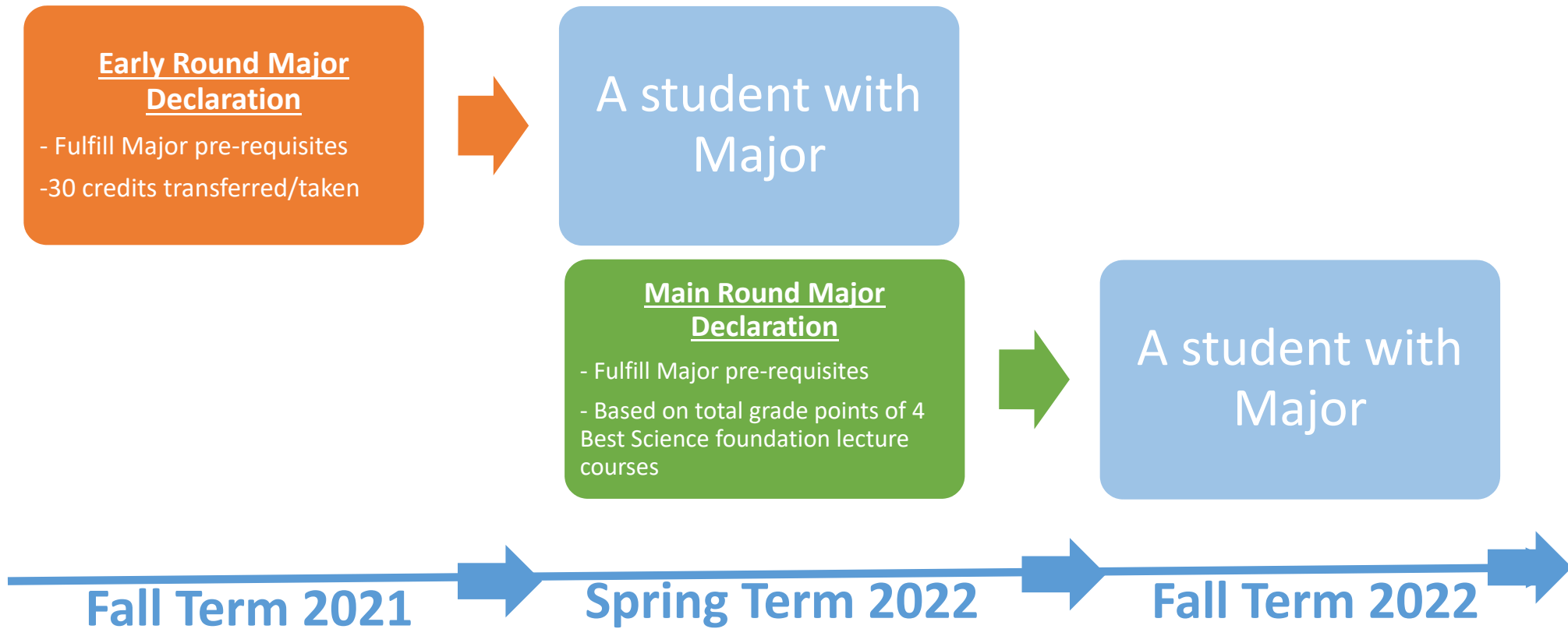
- BSc in Data Science and Technology (DSCT)
- BSc in Mathematics and Economics (MAEC)
- BSc in Biotechnology and Business
- BSc in Risk Management and Business Intelligence (RMBI)
- -----
- -----

Offered by Interdisciplinary Program:

- BSc & BBA Dual Degree Program in Technology and Management (BTGBM, BTFINA, BTECON, BTMGMT, BTMARK)
- BSc in Environmental Management and Technology (EVMT)
- BSc in Individualized Interdisciplinary Major (IIM) e.g. Anthropomorphism In Interactive Systems, Behavioral Consumer Science, etc.

Major Pre-requisites for Science majors

Majors	Major pre-requisites
MATH	MATH1012/1013/1023 <u>AND</u> MATH1014/1024 OR MATH1020
PHYS	PHYS1111/1112/1312 <u>AND</u> PHYS1114/1314
LIFS	LIFS1901 <u>AND</u> LIFS1902
CHEM	CHEM1010/1020 <u>AND</u> CHEM1030
OST	OCES/LIFS1030 <u>AND</u> OCES1001

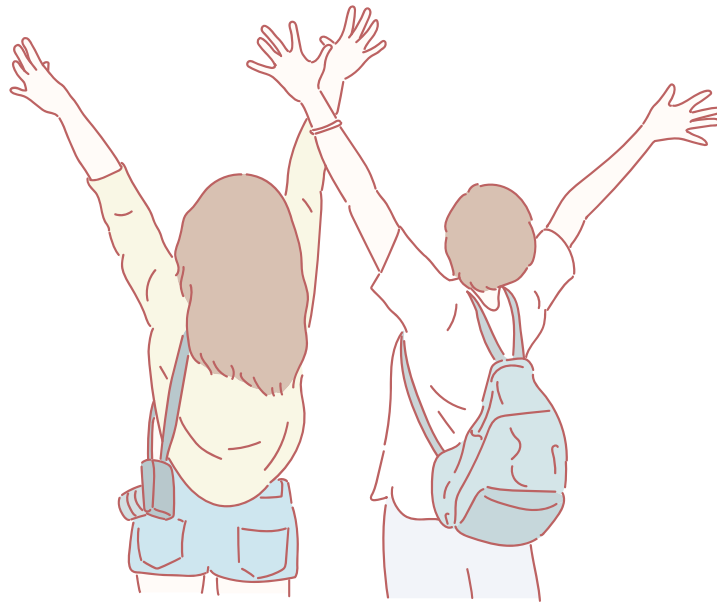


Major Selection Timeline

Credit Transfer

- Credits taken at HKUST
e.g. Summer Institute, etc.
- Qualifications taken outside HKUST
e.g. public exams; course taken in other local or non-local institutions
- Procedure: Automatically or Submit Application
- Details on <https://crtran.ust.hk/>

Snapshots of the past advising events



Orientation Party in 2019



Online Orientation Party in 2020



- The first time ever online Orientation Party was completed with **560 new students**, **8 staff**, **14 helpers** and **64 Peer Mentors** being part of this extraordinary occasion.



Alumni Sharing Series (Nov 2020- Jan 2021)

The Advising team is organizing an Alumni Sharing Series which involves **24 alumni** from **5 continents: Saudi Arabia, Singapore, Germany, United States, Australia, Copenhagen and Finland** from Nov 2020 to Jan 2021.

Over **650** students have participated so far. The alumni have brought so much positivity to the current students and the students showed their gratitude for their support!

Alumni are from the Universities and Companies below:



Deloitte.



NOKIA



Bloomberg

HSBC

COLUMBIA UNIVERSITY
IN THE CITY OF NEW YORK

arabesque

Alipay HK

Lilly



Penn
UNIVERSITY OF PENNSYLVANIA

أرامكو السعودية
saudi aramco

The Nature
Conservancy

JAMES COOK
UNIVERSITY
AUSTRALIA

THE UNIVERSITY
OF QUEENSLAND
AUSTRALIA

URORA
Tele-Oncology

蚂蚁集团
ANT GROUP

Tampere University
of Applied Sciences

港燈
HK Electric

中國銀行
BANK OF CHINA

Dear Sir or Madame,

Hope this email finds you well.

First of all, I would like to thank you all for organizing a series of alumni sharing events!

As a MAEC student, I enjoyed today's sharing by Nora very much. I am so inspired by her experience as an UST student and an employee working abroad. However my laptop wasn't helpful at all during the session which caused lagging and glitches:(

Would you mind sending me the recording of the talk given by Nora? I intends to rewatch it during the weekend to get more out of the wonderful talk.

Thank you in advance.

Best regards,



Science Music Band

